



+31 488 74 54 74  
info@geurtstrucks.com

Buskesdries 14  
6673 DP,  
Andelst  
netherlands

## Mercedes-Benz L 8X4 + FASSI F545RA.2.26 XE-DYNAMIC + JIB L426 KRAAN/KRAN/CRANE/GRUA

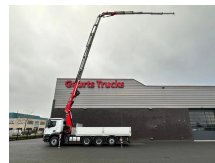
### General-specifications

<b>Id</b>	1789924
<b>Make</b>	Mercedes-Benz
<b>Type</b>	L 8X4 + FASSI F545RA.2.26 XE-DYNAMIC + JIB L426 KRAAN/KRAN/CRANE/GRUA
<b>Year</b>	2023
<b>Operating hours</b>	335
<b>Mileage</b>	9.956 km
<b>Construction</b>	Crane
<b>Emissionclass</b>	6

### Technical-specifications

<b>First registration date</b>	02-08-2023
<b>Fuel</b>	Diesel
<b>Transmission</b>	Automatic
<b>Vehicle identification number</b>	4671
<b>Axle configuration</b>	8x4
<b>Axle count</b>	4
<b>Weight</b>	20.925 kg
<b>Lifting height</b>	3.250 cm
<b>Lifting capacity</b>	15.500 kg

€ On request



### Extras

Air conditioning	LED lights
Air horn	Low-noise
Air suspension	Navigation system
Aluminium fuel tank	Particulate filter
Anti-lock braking system	PTO
Coupling	Radio/cassette player
Cruise control	Reversing camera
Electrically adjustable door mirrors	Speed limiter
Electrically operated windows	Stability control
Fog lights	Toolbox
Heavy duty engine brake	Visor