



+31 488 74 54 74
info@geurtstrucks.com

Buskesdries 14
6673 DP,
Andelst
netherlands

Mercedes-Benz 8X4 + CIFA MAGNUM MK 28L PUMI/CONCRETE MIXER/CONCRETE PUMP

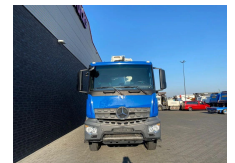
General-specifications

Id	1789584
Make	Mercedes-Benz
Type	8X4 + CIFA MAGNUM MK 28L PUMI/CONCRETE MIXER/CONCRETE PUMP
Year	2019
Mileage	57.490 km
Construction	Concrete pump
Emissionclass	6

Technical-specifications

First registration date	31-05-2019
Fuel	Diesel
Transmission	Automatic
Vehicle identification number	5934
Axle configuration	8x4
Axle count	4
Weight	22.735 kg
Cylinder count	6
Wheelbase	455

€ On request



Extras

Air conditioning	Leaf spring suspension
Air horn	Low-noise
Aluminium fuel tank	Particulate filter
Anti-lock braking system	PTO
Central locking	Radio/cassette player
Central lubrication	Reversing camera
Cruise control	Speed limiter
Electrically adjustable door mirrors	Stability control
Electrically operated windows	Toolbox
Fog lights	Visor
Heavy duty engine brake	